



FOR IMMEDIATE RELEASE

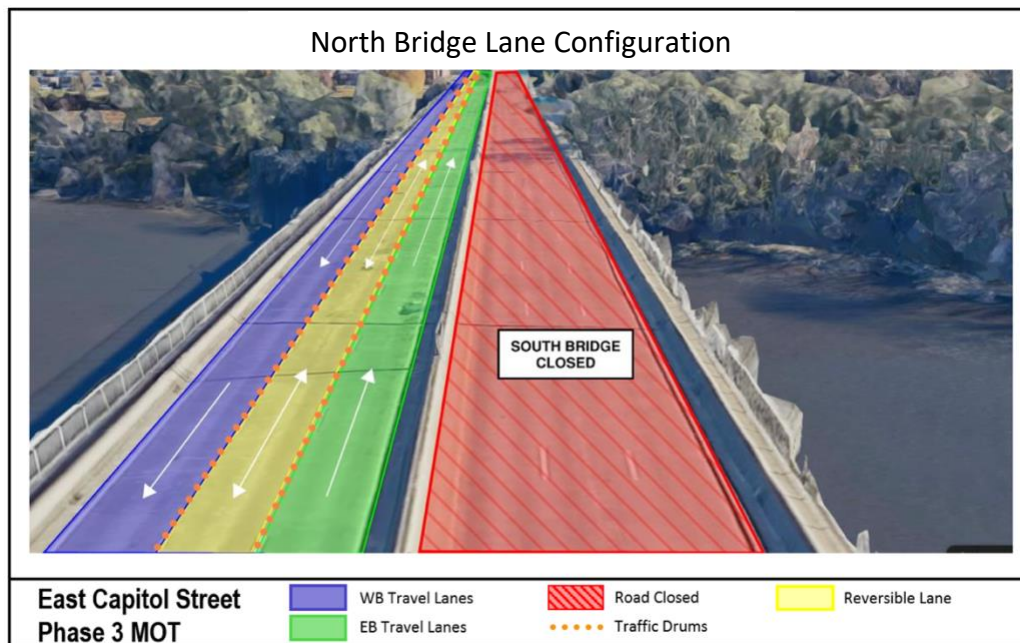
May 15, 2020

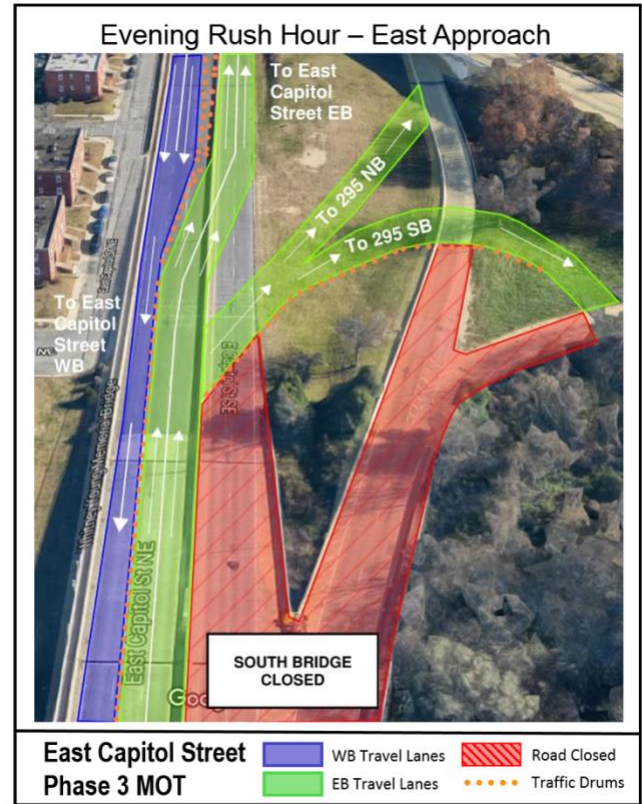
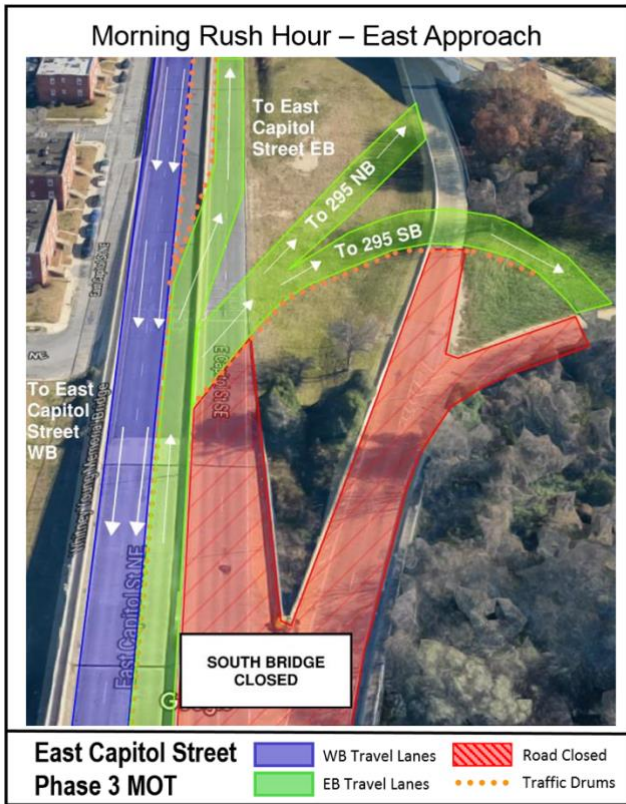
Media Contact:

Lauren Stephens – (202) 465-6112, lauren.stephens@dc.gov

Traffic Pattern Change on East Capitol Street Bridge to Begin on or about May 22

(Washington DC) The District Department of Transportation (DDOT) will change the traffic pattern on the Whitney Young Memorial Bridge (also known as the East Capitol Street Bridge) starting on or about Friday, May 22, 2020, weather permitting. This traffic pattern change is necessary to begin Phase 3 operations on the Rehabilitation of the Whitney Young Memorial Bridge Project. The following changes will be in place and are further exhibited in the graphics below:





- Full closure of the south bridge with all traffic being shifted to the north bridge. Three lanes of traffic will be maintained on the north bridge at all times, using a reversible middle lane to allow for two lanes of inbound traffic during morning rush hour and two lanes of outbound traffic during evening rush hour traffic.
- On the east side of the bridge, temporary ramps will be used to maintain connectivity to the 295 NB and 295 SB on-ramps.
- Bicycle and pedestrian traffic will be detoured to the north (westbound) bridge sidewalk during Phase 3 construction. The reopened north bridge will have a new wider sidewalk, a pedestrian and historic bridge railing and a new deck overlay.

The Phase 3 traffic configuration will be in place through the end of the project, anticipated for late Summer 2020.

The speed limit is reduced to 30 mph during Phase 3 to ensure public and worker safety. Please adhere to this speed limit reduction. Fines are doubled in construction zones.

Traffic controls and signage will be in place to safely guide all travelers through the work zone. Motorists should anticipate delays and all travelers of the roadway are advised to stay alert and use caution when in this area.

Additional information and graphics are available on the project website: www.eastcapbridge.com.

###

The mission of the District Department of Transportation (DDOT) is to enhance the quality of life for District residents and visitors by ensuring that people, goods, and information move efficiently and safely with minimal adverse impact on residents and the environment.

Follow us on [Twitter](https://twitter.com/ddotdc) for transportation-related updates and more; like us on [Facebook](https://www.facebook.com/ddotdc) and follow us on [Instagram](https://www.instagram.com/ddotdc). Visit the website at www.ddot.dc.gov. Visit goDCgo.com for more information on transportation options in the District.